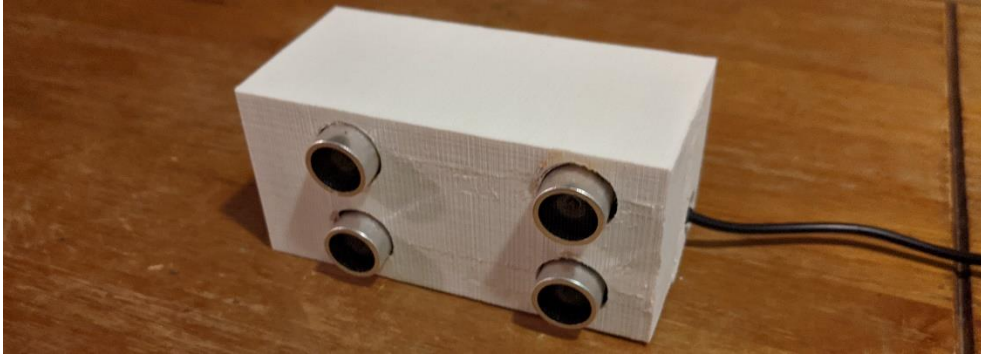


# RoomReader

Real time occupancy tracking for a post pandemic world



## What is RoomReader?

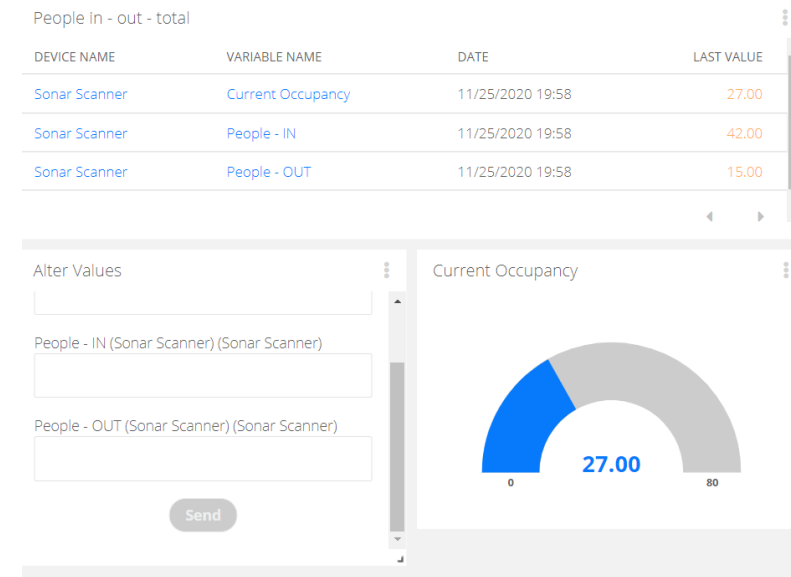
RoomReader is a bi-directional people counter that can detect people moving in or out of a room or space. It transmits occupancy data wirelessly to a web-server where the data can be viewed in real time by a staff member, who can set occupancy limits for individual rooms and be notified when they are being reached or exceeded.

## Why is RoomReader needed?

In the era of social distancing, keeping on top of strict occupancy limits in public spaces can be a monumental task. It has been shown that people cannot be trusted to police themselves, so staff intervention is necessary. By enabling staff to see real time occupancy data at a glance, they can much more effectively ensure a safe experience for all of us who wish to enjoy our community's public spaces.

## How does RoomReader work?

- RoomReader uses ultrasonic sensors to detect when someone walks past it and internal logic to determine the direction.
- When the sensor is triggered it updates the occupancy count and transmits the data via WiFi to a website.
- The website contains a dashboard to easily parse the data and archives data each day for later analysis.



RoomReader digital interface. Above shows the dashboard and below shows an example of viewing occupancy data for a desired time period.

